

DATASHEET

DT-Mobil Easy pick-up 210 l, 12 V, lid 12V pump, auto shut-off nozzle

Order number: 11251



TECHNICAL DATA

Content Volume	210 l
External dimensions (l x w x h)	117.5 x 78.5 x 45 cm
Weight	35 kg
Use	mobile
Installation Location	transport
Coating	uncoated
Container Colour	grey
Operating Voltage	12V DC
Pump Drive	pump
Max. Flow Rate	40 L/min (max.)
Dispensing Hose Length	4.37 m
Hose Diameter	DN 19
Stackable	yes

ADR craftsmans rule	according to ADR 1.1.3.1.c)
Dispensing Nozzle	Automatic diesel
Warranty in years	2
Assembly condition	mounted
Plug	pole pliers

EQUIPMENT

Lid	yes
Hose Reel	no
Filter with Water Separator	no
Contents gauge	without
Overfill Sensor	no
Bund Leak Indicator	no
Tank Data Management	no
Tanker Coupling	no
Heating	no
Forklift Pockets	yes

SUITABLE MEDIA

Diesel
Biodiesel
HVO
Heating Oil

LOGISTICS

Package dimensions (lxwxh)	120 x 80 x 46 cm
Units per box	1
Units per pallet	4
Pallet Dimensions	120 x 80 x 184 cm
Package Weight	49.5 kg

ACCESSORIES



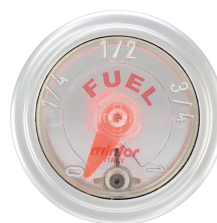
10229 - Plug DIN 9680, 3-pin, 6-24 V, max. 25A, IP54



10230 - Socket DIN 9680, 3-pin, 6-24V, max.25A, IP54



11111 - Digital flow meter K24 (210L,440L,Combi) for DT-Mobile Easy 210, 440,Combi 440/50



11256 - Level indicator compl. for DT-Mobile Easy pick-up 210I



for safe storage



[Link to product](#)